

Material selection: Cast Iron GG25  
Surface treatment: Black phosphating

## Dimensions (mm)

Type	Bush No.	OD	H	B	BC	E	L	J
<b>SM12</b>	1210	180	75	90	135	6.5	25	6 x Ø7.5
<b>SM16-1</b>	1610	200	85	110	150	7.5	25	6 x Ø7.5
<b>SM16-2</b>	1615	200	85	110	150	7.5	38	6 x Ø7.5
<b>SM20</b>	2012	270	110	140	190	8.5	32	6 x Ø9.5
<b>SM25</b>	2517	340	125	170	240	9.5	45	8 x Ø11.5
<b>SM30-1</b>	3020	430	160	220	300	13.5	51	8 x Ø13.5
<b>SM30-2</b>	3020	485	160	250	340	14.0	51	8 x Ø13.5

## Matched Taper Bush

### SM12

Matched Taper Bush 1210  
Bore size option (mm): 11, 12, 14, 16, 18, 19, 20, 22, 24, 25, 28, 30, 32

### SM20

Matched Taper Bush 2012  
Bore size option (mm): 18, 19, 20, 22, 24, 25, 28, 30, 32, 35, 38, 40, 42, 45, 48, 50

### SM30-1 & SM30-2

Matched Taper Bush 3020  
Bore size option (mm): 25, 28, 30, 32, 35, 38, 40, 42, 45, 48, 50, 55, 60, 65, 70, 75

### SM16-1 & SM16-2

Matched Taper Bush 1610 & 1615  
Bore size option (mm): 14, 16, 18, 19, 20, 22, 24, 25, 28, 30, 32, 35, 38, 40, 42

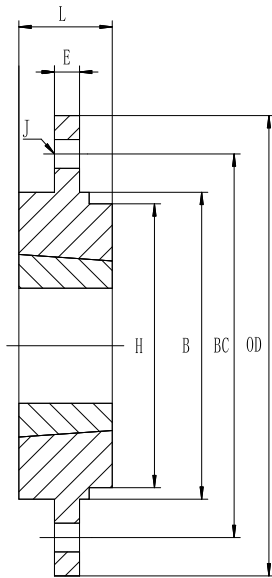
### SM25

Matched Taper Bush 2517  
Bore size option (mm): 20, 22, 24, 25, 28, 30, 32, 35, 38, 40, 42, 45, 48, 50, 55, 60

## Application :

HVAC system, Ventilation System, Fan industry





Material selection: Cast Iron GG25  
Surface treatment: Black phosphating

## Dimensions (mm)

Type	Bush No.	OD	H	B	BC	E	L	J
<b>BF12</b>	1210	120	74	80	100	6.5	25	6 x Ø6.6
<b>BF16</b>	1610	130	84	90	110	6.5	25	6 x Ø6.6
<b>BF20</b>	2012	145	99	100	125	8.5	32	6 x Ø9.0
<b>BF25</b>	2517	185	120	130	155	11.5	44	6 x Ø11.0
<b>BF30</b>	3020	220	146	165	190	11.5	50	6 x Ø13.0

## Matched Taper Bush

### BF12

Matched Taper Bush 1210  
Bore size option (mm): 11, 12, 14, 16, 18, 19, 20, 22, 24, 25, 28, 30, 32

### BF20

Matched Taper Bush 2012  
Bore size option (mm): 18, 19, 20, 22, 24, 25, 28, 30, 32, 35, 38, 40, 42, 45, 48, 50

### BF30

Matched Taper Bush 3020  
Bore size option (mm): 25, 28, 30, 32, 35, 38, 40, 42, 45, 48, 50, 55, 60, 65, 70, 75

### BF16

Matched Taper Bush 1610 & 1615  
Bore size option (mm): 14, 16, 18, 19, 20, 22, 24, 25, 28, 30, 32, 35, 38, 40, 42

### BF25

Matched Taper Bush 2517  
Bore size option (mm): 20, 22, 24, 25, 28, 30, 32, 35, 38, 40, 42, 45, 48, 50, 55, 60

## Application :

HVAC system, Ventilation System, Fan industry

