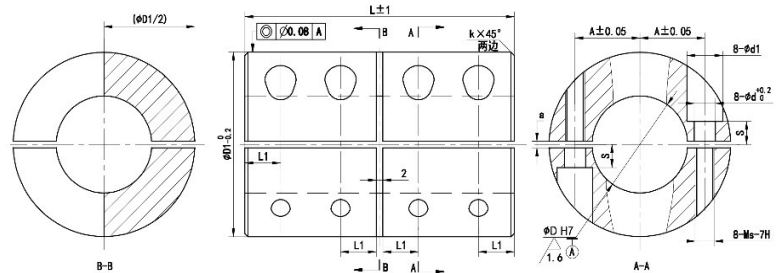


Dimensions (mm)

Model	D(H7)	D1	L	d	d1	A	L1	L2	S	Ms	H
CT-6	6	18	30	3.2	5.8	5.5	4	6.5	2	M3x8	5
CT-12	12	29	45	4.2	7.3	10	6	10	4	M4x12	8.5
CT-15	15	34	50	5.3	9.5	11.5	6	12	4.5	M5x16	9.5
CT-16	16	34	50	5.3	9.5	11.5	6	12	4.5	M5x16	10
CT-25	25	45	75	6.4	11	17	9	19	6	M6x16	15
CT-35	35	67	95	8.5	14	25	12	23	10	M8x25	21
CT-40	40	77	108	8.5	14	30	13	27	10	M8x25	24
CT-50	50	85	124	10.5	17	33.5	15	31	10	M10x25	29



Dimensions (mm)

Model	D(H7)	D1	L	d	d1	A	L1	S	a	Ms	k
CTG-6	6	18	30	3.2	5.8	5.5	4	2	1	M3x8	0.5
CTG-8	8	24	35	3.2	5.8	8	4.5	3	1	M3x10	0.5
CTG-10	10	29	45	4.2	7.3	10	6	4	1.5	M4x12	0.5
CTG-12	12	29	45	4.2	7.3	10	6	4	1.5	M4x12	0.5
CTG-14	14	34	50	5.3	9.5	11.5	6	4.5	1.5	M5x16	0.5
CTG-16	16	34	50	5.3	9.5	11.5	6	4.5	1.5	M5x16	0.5
CTG-20	20	42	65	6.4	11	15	8	6	2	M6x16	1
CTG-25	25	45	75	6.4	11	17	9	6	2	M6x16	1
CTG-30	30	53	83	6.4	11	20.5	10.5	6	2	M6x18	1
CTG-50	50	85	124	10.5	17	33.5	15.0	10	2	M10x25	1

Notes:

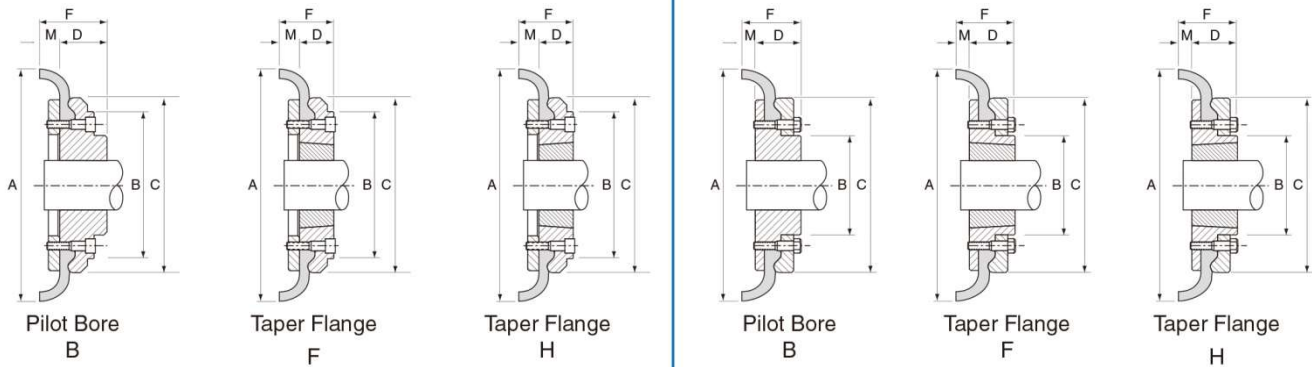
All couplings material option: Steel C45, Stainless steel.

If need finished bore, pls confirm the bore size before place an order.



Size 040 to 060

Size 070 to 250

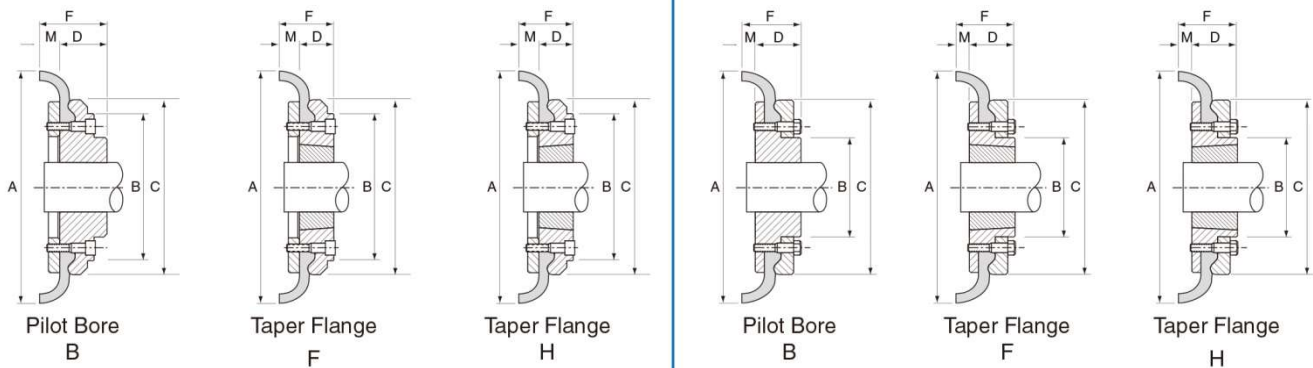


FEX Tyre Coupling Data

Coupling Size	Bush Size	Max Bore		Pilot Bore	A	B	C	M★	Type F & H		Type B		Weight# kg
		Metric	Inch						F	D	F	D	
040B	-	32	-	12	104	-	82	11.0	-	-	33	22	0.84
040F	1008	25	1"	-	104	-	82	11.0	33.0	22	-	-	0.84
040H	1008	25	1"	-	104	-	82	11.0	33.0	22	-	-	0.84
050B	-	38	-	15	133	79	100	12.5	-	-	45	32.5	1.26
050F	1210	32	1.1/4"	-	133	79	100	12.5	37.5	25	-	-	1.26
050H	1210	32	1.1/4"	-	133	79	100	12.5	37.5	25	-	-	1.26
060B	-	45	-	18	165	103	124.5	16.5	-	-	55	38.5	2.1
060F	1610	42	1.5/8"	-	165	103	124.5	16.5	41.5	25	-	-	2.1
060H	1610	42	1.5/8"	-	165	103	124.5	16.5	41.5	25	-	-	2.1
070B	-	50	-	22	187	80	142	11.5	-	-	46.5	35	3.26
070F	2012	50	2"	-	187	80	142	11.5	44.5	33	-	-	3.26
070H	1610	42	1.5/8"	-	187	80	142	11.5	42.5	31	-	-	3.15
080B	-	60	-	25	211	98	165	12.5	-	-	55	42.5	5.15
080F	2517	65	2.1/2"	-	211	98	165	12.5	58.5	46	-	-	5.15
080H	2012	50	2"	-	211	98	165	12.5	45.5	33	-	-	4.83
090B	-	70	-	28	235	108	187	13.5	-	-	63.5	50	7.46
090F	2517	65	2.1/2"	-	235	108	187	13.5	59.5	46	-	-	7.35
090H	2517	65	2.1/2"	-	235	108	187	13.5	59.5	46	-	-	7.35
100B	-	80	-	32	254	120	214	13.5	-	-	70.5	57	10.4
100F	3020	75	3"	-	254	120	214	13.5	65.5	52	-	-	10.4
100H	2517	65	2.1/2"	-	254	120	214	13.5	59.5	46	-	-	9.87
110B	-	90	-	30	279	134	232	12.5	-	-	70.5	58	13.1
110F	3020	75	3"	-	279	134	232	12.5	64.5	52	-	-	12.3
110H	3020	75	3"	-	279	134	232	12.5	64.5	52	-	-	12.3

Size 040 to 060

Size 070 to 250



FEX Tyre Coupling Data

Coupling Size	Bush Size	Max Bore		Pilot Bore	A	B	C	M★	Type F & H		Type B		Weight# kg
		Metric	Inch						F	D	F	D	
120B	-	100	-	38	314	143	262	14.5	-	-	84.5	70	17.7
120F	3525	100	4"	-	314	140	262	14.5	80.5	66	-	-	17.7
120H	3020	75	3"	-	314	140	262	14.5	66.5	52	-	-	16.7
140B	-	130	-	75	359	178	313	16.0	-	-	110.0	94	23.3
140F	3525	100	4"	-	359	178	313	16.0	82.0	66	-	-	23.4
140H	3525	100	4"	-	359	178	313	16.0	82.0	66	-	-	23.4
160B	-	140	-	75	402	197	347	15.0	-	-	117	102	37.6
160F	4030	115	4.1/2"	-	402	197	347	15.0	92.4	77.4	-	-	34.1
160H	4030	115	4.1/2"	-	402	197	347	15.0	92.4	77.4	-	-	34.1
180B	-	150	-	75	470	205	396	23.0	-	-	137	114	51.6
180F	4535	125	5"	-	470	205	396	23.0	112.0	89	-	-	44.3
180H	4535	125	5"	-	470	205	396	23.0	112.0	89	-	-	44.3
200B	-	150	-	85	508	206	433	24.0	-	-	138	114	61.1
200F	4535	125	5"	-	508	206	433	24.0	113.0	89	-	-	56.3
200H	4535	125	5"	-	508	206	433	24.0	113.0	89	-	-	56.3
220B	-	160	-	85	562	224	472	27.5	-	-	154.5	127	83.6
220F	5040	125	5"	-	562	224	472	27.5	129.5	102	-	-	75.6
220H	5040	125	5"	-	562	224	472	27.5	129.5	102	-	-	75.6
250B	-	190	-	88	628	254	532	28.5	-	-	160.5	132	109.0
250F	5040	125	5"	-	628	254	532	28.5	155.5	127			106.0
250H	5040	125	5"	-	628	254	532	28.5	155.5	127			106.0

Notes:

= Is the weight for a half coupling.

★ = M is half the distance between flange faces.

All flexible tyres have an angular misalignment capacity up to 4°